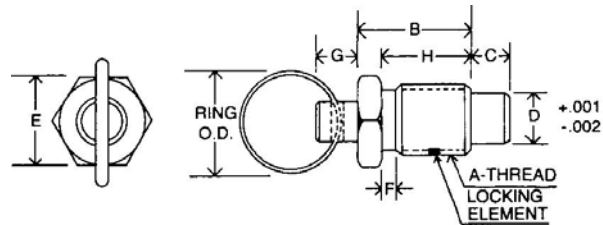


Spring Loaded Devices

Retractable Plungers

Pull Ring Style

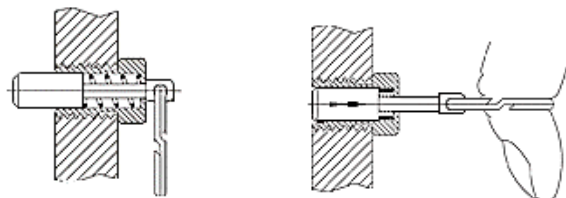


For use in application with limited space
Slight taper on end of plunger for easy alignment
Pull on ring against spring to retract tip, release to re-engage.

Zinc Plated steel or 303 Stainless Steel

Non Locking Plunger – Pull Ring

Steel Part Number	Stainless Part Number	Force, lbs		A	B	C	+.001 -.002 D	E	F	G	H	O.D.
		Initial	Final									
27441	27800	0.50	2.0	1/4-20	7/16	3/16	.156	1/4	1/32	5/32	9/32	3/4
27442	27801	0.75	3.0	3/8-16	5/8	9/32	.250	3/8	1/8	3/16	7/16	3/4
27443	27802	1.00	4.0	1/2-13	13/16	3/8	.312	1/2	5/32	1/4	9/16	1
27444	27803	1.25	5.0	5/8-11	1	7/16	.375	5/8	5/32	5/16	11/16	1



All data is for guidance only and is subject to change without notice